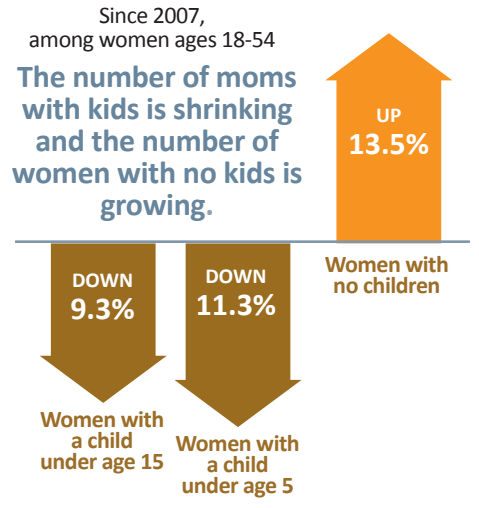
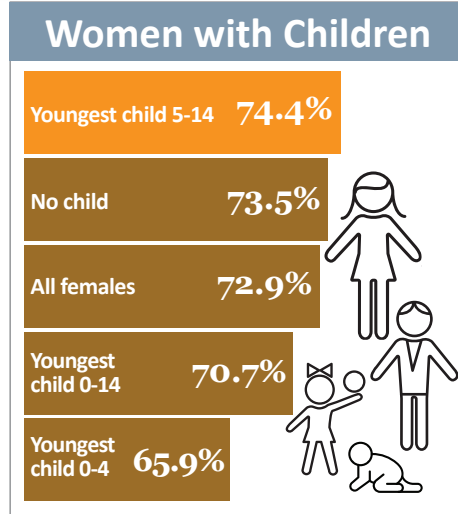


Labor Force Participation by Women in the U.S.

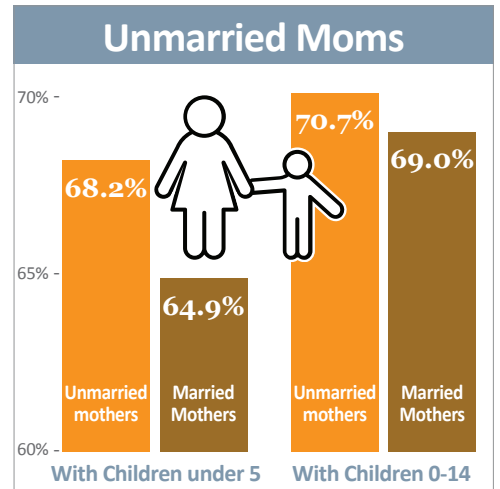
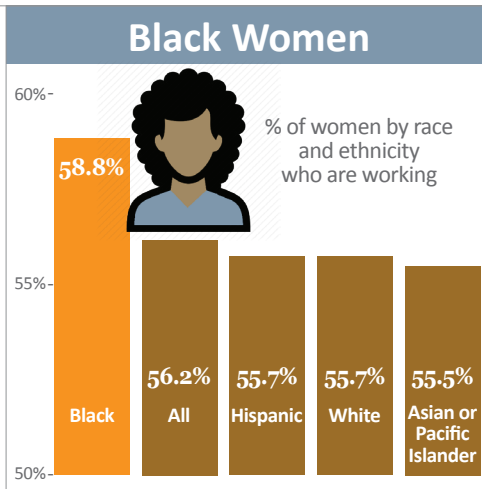
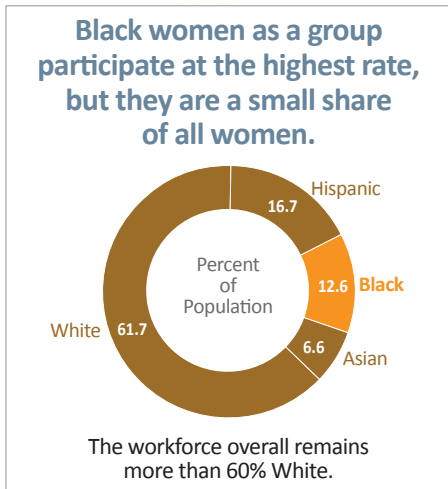


The use of paid care is most closely associated with the labor force participation of mothers.

Which Women Participate Most in the Labor Force?

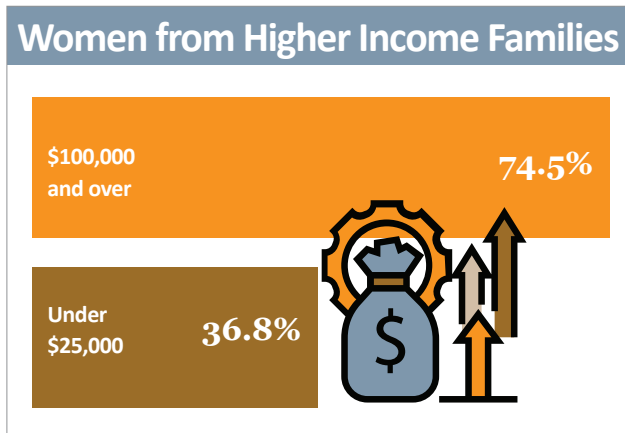


In 2021, among women ages 18-54, mothers with children ages 5-14 are the group with the highest labor force participation rate.

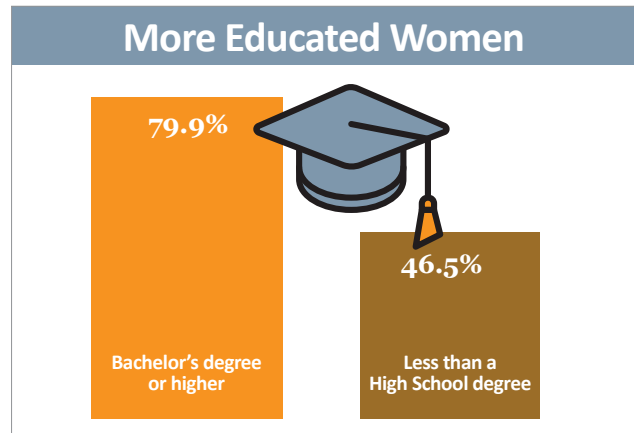


In 2021, Black women participated in the labor force at a higher rate than all women, White women, Hispanic women, and Asian women.

In 2021, the labor force participation rate for unmarried mothers is greater than that for married mothers.



In 2021, the labor force participation rate for families with income of \$100,000 or more is more than double the rate for families with income under \$25,000.



In 2021, the gap between the labor force participation rate of mothers with a bachelor's degree or higher and mothers with less than a high school education is 33.4 percentage points.